



**SRC Board & Management Groups  
Overall Structure**

D. Norris  
Chairman

C.G. Stirling  
Vice Chairman

Duncan Gilmour  
Company Secretary

B. Thomson E  
General Engineering

S.D. Muirhead %H  
Signalling & Operations Stds

B. Burgess  
Deputy Catering/  
Volunteer/HOPS

K. Donaldson £ H  
Catering  
Electrical (Shared)

R. Anderson £  
Finance  
Commercial/Retail

J. Yule £  
Commercial/  
Contracts

M. Tough H  
Infrastructure/  
Permanent Way

D. Scott H E  
Health & Safety

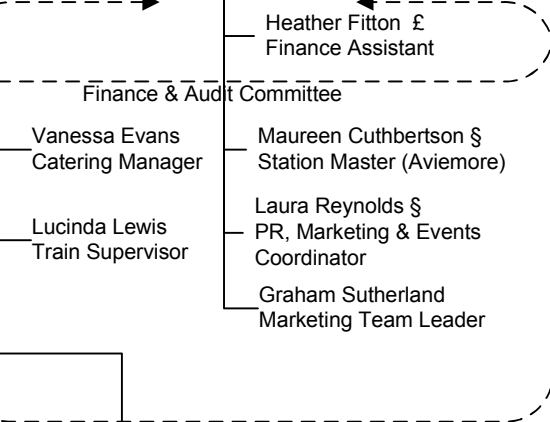
C.G. Stirling £ H  
ICT  
(IT/Telecom/Web)  
Electrical (Shared)

Calum Tittley § %  
Traction Inspector

Irvine Roy %  
Signalling Advisor

Keith Holyland § % H E  
Operations  
Manager

Dave Green E  
Diesel Fleet  
Coordinator



Admin, Finance, Sales & Marketing Staff

Georgina McNair § %  
Outdoor Supt. (Part Time)

John Sinclair §  
Diesel Fitter

Nick Thomson  
Property Advisor

Andrew Fairley  
Voice Telephony, Infrastructure  
& Advanced Ticketing

Graham Sutherland  
Website Optimisation

Andy MacKinnon  
Websites  
Office IT Support

Mike Insch  
Social Media Admin  
HOPS IT Admin

Roderick McLeod  
SRA Web Representative

Neil McQueen  
Volunteer Communications  
(Blogs)

Nathan Lightowler §EH  
Loco Shed  
Foreman

Alan French E  
Engineering  
Committee / QA

Jack Nesbit §  
C&W Foreman

Paul Blount E  
Lottery Liaison  
Schools Liaison  
Apprenticeships

Alan Coulson §H  
General Assistant (Part Time)

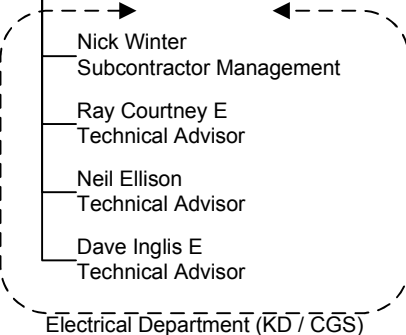
Aiden Hannah §  
Engineering Apprentice

Benny McInnes §  
General Assistant

John Sinclair §  
Diesel Fitter

Richard Fell §  
Coachbuilder/Fitter

Steve Robinson §  
Workshop Assistant



£ DENOTES MEMBER OF FINANCE COMMITTEE

H DENOTES MEMBER OF HEALTH & SAFETY COMMITTEE

% DENOTES MEMBER OF OPERATIONS COMMITTEE

E DENOTES MEMBER OF ENGINEERING COMMITTEE

Aviemore Sheds Staff